

June 2026

BASINGA



Graham Caddell



Old Basing and Lychpit Parish Magazine
www.basinga.org.uk

GRAPHIC COMMUNICATIONS FOR A SUSTAINABLE AND DIGITAL WORLD

Greenhouse Graphics, the home of sustainable print and graphics since 1993 and widely recognised as a leading sustainable print centre in the UK, pioneering green innovations including our unique carbon calculator.

If you are looking to improve your sustainability and reduce your print carbon footprint please visit our website or call the team on 01256 880770.

01256 880770

www.greenhousegraphics.co.uk info@greenhousegraphics.co.uk



greenhouse
Design | Print | Signage | Display

JUNE COVER PHOTO, NOTES AND NEWS

This month's lovely cover photograph, '**Ten Blue Tit Chicks**' was 'taken' by **Graham Caddell**. More about this nesting box and other nature notes can be found on page 28.

June marks the start of the summer in the northern hemisphere; wait for it!

The Basinga Committee would like to recruit an **Advertising Manager** to replace the current volunteer who has left the area. The role includes, but is not limited to: recruitment and maintenance of our advertisers and their adverts; driving the renewal process in the last quarter of the year; liaising with the editor, treasurer and our printer to ensure timely delivery of the monthly magazine. Our advertisers, as you can read below, are the life-blood of this magazine, and need to be 'looked after' carefully. If you are interested in joining the team in this role, or any other, or have any questions about this, or any other 'jobs', then please e-mail the editor at: editor@basinga.org.uk

OUR ADVERTISERS

Our advertisers are well-established and most of them have been with us for a long time, are reliable and would welcome your custom. In order to maintain the production and free distribution of this magazine, we need to maintain our base of advertisers. If you know of any business wishing to promote themselves in this area, please suggest they get in touch and advertise with us. It also helps us if you can mention seeing their advert in Basinga.

Our website www.basinga.org.uk has a list of our advertisers, either alphabetically or by page: from the home page choose 'OUR ADVERTISERS', then select 'CONTRACT ADS' to list our advertisers alphabetically. For **Free Ads** visit **Basinga Extra** and fill out the form under 'Advertising with us'.

CONTRIBUTIONS TO THE BASINGA

The **very last date for copy** to the Editor for the **July** edition is **6.00pm on Wednesday, 10th June, although we do welcome copy in advance of this date**. Please use the forms on the **Basinga** website www.basinga.org.uk to get your dates, articles and letters to us. **Don't forget that we only accept articles with about a 300-word maximum: articles may be edited and are published at the Editor's discretion.**

Our Privacy Policy is available to read on the website which includes the GDPR requirements for publishing photographs. Contact names, telephone numbers and e-mail addresses for all our volunteer 'managers' are listed on page 34.

All advertisements in the magazine and website are inserted in good faith and the Basinga Management Committee accepts no responsibility for any statement, omission or errors made by the advertisers; nor does it endorse the products or services advertised. The views and opinions expressed in the Basinga are those of the organisations, individuals and authors concerned and not necessarily those of the Basinga Management Committee.

PHOTOS AND LOGOS FOR THE BASINGA

We now have a web form that you can use to send any photograph for the website archive and possible use in the magazine: go to www.basinga.org.uk and the form can be found on the '**Contributors Submission**' menu. Should you wish to submit multiple photos, or a photo is too 'large', they can be emailed directly: editor@basinga.org.uk

THE FRAME

GALLERY & FRAMING

FRAMING | ART | GIFTS | HOMEWARE

The Frame Gallery is in the centre of Odiham's High Street, where you can take advantage of the free parking and pop in for a no-obligation framing quote, from our experienced team. We stock a full range of 'made to measure' and 'ready made' frames plus you can enjoy the regularly changing original and limited print artwork and gifts.



Speak with Gallery Owner Katie Bleathan ☎ 01256 701082 @hello@theframe-gallery.co.uk

Nº 81 | High St | Odiham | Hants | RG29 1LB Tues to Sat 9.30am - 5pm Stay Connected

B . COOPER

DOMESTIC APPLIANCE REPAIRS

Repairs and servicing to most makes and models of

Washing Machines , Tumble Dryers ,

Dishwashers , Cookers ,

Microwaves , Fridges , Freezers ,

And Vacuum Cleaners .

Set Labour Charges , No VAT

Tel. 01256 466851 or mobile 07831 684375

M MARTIN
MATTHEWSON

TERRA CLEAN
Healthy living for ever and ever

ALL MAKES SERVICING & REPAIRS
THE VOLVO & NISSAN SPECIALISTS



MOT DUE
BOOK
NOW



TEL: 01256 364753

WWW.GARAGEBASINGSTOKE.CO.UK

UNIT 1 PENSDELL FARM, FARLEIGH ROAD, CLIDDSDEN, BASINGSTOKE, HANTS, RG25 2HA

Infinite Harmony

Yoga Therapy • Hatha & Somatic Yoga • Chair Yoga

- Gentle, accessible yoga for every body
- Supporting stress, pain, recovery and wellbeing
- Scheduled classes in Lychpit, Chineham & central Basingstoke
- Private 1-to-1's & online sessions
- Yoga Nidra and wellbeing coaching.

☎ 01256 910108

infiniteharmony.co.uk



INTERIOR **Painter's Pride** EXTERIOR



**EXPERIENCED HOUSEHOLD
PAINTER & DECORATOR**

NO JOB TOO SMALL

TEL: 01256 355356 or 07876 495657



Come and be a volunteer at the Old Basing and Lychpit Carnival on **Saturday, 20th June**. It is a great annual event for all the family so come and join our friendly band of volunteers and take a fun and active part. It is so simple to get involved simply go to the Carnival website www.obalcarnival.org then click on '**Get Involved**' and select '**Volunteering**'. There you will be able to state when you are able to help and what you would like to do.

For the day of the Carnival the village of Old Basing will see Toys Come Alive!

This is because it is the theme for this year's Old Basing and Lychpit **Carnival procession**. This will start from the **Royal British Legion** at **noon** and will move along **The Street** and finish at the **Recreation Ground**.

Spectators are welcome to watch from the roadside. Whilst the procession is taking place, road closures will be in operation for at least 15 minutes before the procession leaves the Royal British Legion. These will be on Crown Lane from Fiveways to the Crown Public House, The Street from Crown Lane to Newnham Lane, Milkingpen Lane between the junction with Belle Vue Road and the Street and also Church Lane between its junction with Milkingpen Lane and the Street.

After the procession the rest of the carnival fun is at the **Recreation Ground** and admission is from **noon** until it closes at **4.30pm**. There are two ways to enter the venue, on foot at Riley Lane or at the main entrance to the Rec. Limited free parking is possible at the main entrance. The cost is **£2** per person, with children **under-five** going **free** and please note (as per the Parish Council rules) **no dogs** are allowed in the Recreation Ground. Entrance payment will be by **cash** or **card** with a separate lane for each. Some attractions will be accepting cash only, so having some cash to hand would be advisable.

There will be a multitude of arena events this year which includes **The Royal British Legion Band, Old Basing Infant School Choir, Linguatastic Language School, Paul Jones Judo** and **Sing Now Choir**.

Around the arena there will be **local craft** and **charity stalls** and also a great selection of **foods** and **beverages**. Also at the Rec, will be a host of **classic cars and motorcycles** to look around, which always proves to be very popular.

New for this year's Carnival is the **Teddy Bear Hospital** which is being kindly run by the **Oakley Stitches**. (see *May Basinga*). To finish things off the children make a badge for their bear to show how brave they have been. We look forward to seeing you all with your teddies on Carnival Day.



Along with this there will be the chance to try out **archery**, have a go on the **climbing wall** or take part in **circus activities**. Last year, the traditional games proved a big hit so are back by popular demand, but remember they are **cash only**.

So it is all set to be a great fun day for the all the family- so come along and join us.

Graham Merry Carnival Committee member



CHEQUERS

Independent Estate Agents

THINKING OF SELLING IN

2026



Successfully selling property in Old Basing since 1992

Contact us for your FREE valuation



01256 810018 sales@chequersestateagents.co.uk

OLD BASING BOILER SERVICES



Boiler Installations

Servicing and Repairs

Unvented/Vented Cylinders

Power Flushing
of Heating Systems

Free Estimates

No Call Out Charge

Landlord Certificates

Fully Insured

01256819521 **Bill Martin** 07990514472

www.oldbasingboilerservices.com

Keeping you Gas Safe



07841 532 878

For all your Home & Garden needs,
including:

- Fencing
- Decking
- Shed construction & Bases
- Landscaping
- New lawns
- Artificial Grass

- Painting & Decorating
- Handyman Jobs
- Tiling
- Flooring



www.primeimprovements.co.uk



Annual Parish Meeting

The Annual Parish Meeting was held on 30 April at the Royal British Legion Social Club and provided a valuable opportunity for residents to hear about the Parish Council's work over the past year, as well as wider issues affecting our community.



In his welcome, the Chair highlighted a wide range of achievements over the past year, including the replacement of cricket nets, installation of new benches across the parish, progress on the new business plan, and the launch of updated branding and a new website. Members also heard about the adoption of Broadhurst Village Green, ongoing work on the Neighbourhood Plan and Local Plan responses, and the effective use of Community Infrastructure Levy (CIL) funding to support local facilities such as Lychpit Hall, the Royal British Legion car park, and St Mary's Church. The Chair also acknowledged that the recent increase in the precept was higher than many would have wished but emphasised that it had been carefully considered and directed towards key priorities.

Those present were pleased to hear from representatives from the Basingstoke Rural Neighbourhood Policing Team, who provided an informative update on local policing matters. Residents were advised to be particularly vigilant regarding rogue traders and cold callers, which have become more prevalent locally, and to report concerns promptly. Updates were also given on issues such as vehicle theft, off-road bikes, and road safety enforcement.

The evening concluded with questions from residents, covering topics such as traffic speeds, future use of speed indicator devices, and access to more detailed financial information on the Parish Council website. The Chair closed by thanking all speakers and attendees for their contributions to a well attended and informative meeting.

Recreation Ground Footpath

The resurfacing of the footpath at Old Basing Recreation Ground has now been completed. The Parish Council approved a full reconstruction as the most durable long-term solution, and the work has been carried out by Apollo Surfacing Ltd. The new surface provides a safer, smoother route for all users.

New Lychpit Benches

Two new benches have been installed in Lychpit following requests from residents for more places to rest. Funded by Borough Councillor grants and installed by the Parish Council with permission, they provide a welcome addition for those using local footpaths.

Meetings for June 2026

The Council has agreed to adjust the timing of its monthly meetings. Previously, meetings were held on the first Tuesday of each month, which could sometimes create pressure to prepare financial information so soon after the month end. To allow more time for this work to be completed thoroughly, meetings will continue to be held on Tuesday evenings but not always on the first Tuesday of the month.

If you are planning to attend a meeting, please check the Parish Council website or local noticeboards for confirmed dates, or contact the Parish Clerk for further details. The next Full Parish Council meeting will take place on **Tuesday, 16th June at 7.30pm**, with the Facilities Management Committee meeting scheduled for **Tuesday, 9th June at 7.30pm**.

THE MILL FIELD NATURE RESERVE



A big thank you to Jim Andrews and everyone who joined the dawn chorus walk on Saturday, 25th April. It was very well attended and despite a cold, misty start, the morning soon brightened into perfect conditions. The birds were wonderfully obliging, with sightings including Long tailed tits, Blue Tits, Wrens, Dunnocks and Blackcaps.

We hope to see you at our stand at the Old Basing and Lychpit Carnival on Saturday, 20th June. We'll be alongside Natural Basingstoke, where Alan will be displaying his fascinating skull collection, along with his ever popular "Whose Poo?" game.



Please pop along and say hello.

We recently launched our "**Dog Walkers Against Litter**" campaign (*poster, left*). Although it wasn't aimed specifically at Mill Field visitors, we've already noticed a welcome reduction in litter across the site, which is great to see.



What to look for in June:

Common Spotted and Pyramidal Orchids, Grass Vetchling and Meadow Vetchling. On warmer days, butterflies such as Meadow Brown and Marbled White should be on the wing. Bird activity will increase as adults feed their young, with Whitethroats especially noticeable. Swifts and House Martins will be overhead, and raptors may be seen hunting. Dragonflies will appear near the water and woodland, and there is always the chance of spotting deer or a fox.

Latest wildlife sightings are displayed on the board near the Little Basing entrance, and more wonderful photos and updates can be found on our Facebook page. We are fortunate to have such a rich nature reserve, so please help protect it by staying on the paths.

Email: millfieldnature@gmail.com Facebook: **Mill Field Conservation Group**

THE WELCOME TEA ROOM AT ST. MARY'S CHURCH



Wow, what a fabulous time we had in May! We hope everyone who came along to indulge in a Cream Tea as part of **St Mary's Open Gardens and Flower Festival** enjoyed themselves as much as the Tea Room volunteers! A huge shout out to our volunteer bakers who baked in

excess of 300 scones of so many different varieties and to all the volunteers who give their time so readily each month.

We really appreciate your support, whether you're a regular or occasional visitor to The Tea Room. We're pleased to let you know that we shall continue to be open throughout the summer on the **first and third Fridays, 2.00 - 4.00pm**, with our June opening dates being **5th and 19th June** by which time the sun will hopefully have his hat on and you can enjoy open air refreshments.



If anyone has a favourite cake that they would like to see on the table do let one of the volunteers know – we're always open to suggestions.

FRIENDS OF ST. MARY'S CHURCH

Supporting Our Church and Community

The Friends of St Mary's were delighted to play a part in this year's Flower Festival, organised by the church. We were proud to sponsor one of the beautiful flower displays inside St Mary's – we hope you had the chance to see it.



Three of our committee members also kindly opened their gardens as part of the village **Open Gardens** scheme, and we are very grateful to them for supporting the weekend so generously (*photos left*).

Meanwhile, you may have noticed the screened-off section in the Bolton Chapel. That's where work we have funded is now in progress. We look forward to revealing the results in due course – and thank you for your

patience as we continue to care for and improve our cherished church.

Events: FOBS Fair – July 5th; Barn Dance – Oct. 3rd; Murder Mystery – Nov. 14th.

The Friends of St Mary's Church – www.FOSMC.org

OBLEC – LOVE THE LODDON



Thank you everyone who turned out on what was a very nice evening to celebrate our river. We got extensive coverage on South Today, a report in the Gazette and even the Daily Telegraph. The Committee would like to publicly welcome the Parish Council's adoption of their River Loddon Charter. This can be read on their website. At our April meeting the Committee voted '**That OBLEC should actively support the Borough Council's campaign on Water Supply Capacity**'. We will be addressing how to do this.

Cllr Paul Harvey, Leader of the Borough Council, kindly gave up his time to clarify the situation for us. Stand-out points were that SE Water has met the Borough Council and admitted that supplies are just not there for the increased housing numbers – 6000 since the last General Election. Officers at the Ministry of Housing, Communities and Local Government are reported to be furious with SE Water and are demanding a solution by September! In terms of sewage, Thames Water has an upgrade to Chineham STW scheduled to be done by 2027 but they will not engage with the Council so it is unclear if this has been done or is going to be done. Basingstoke is not alone in this situation. All the south of England is water stressed: Cambridge and Tonbridge are in the same situation that we are and there was a moratorium on building at Horsham as the reservoir it depends on cannot meet the demands.

There was good news when Sheena Grassi and Gill Moore did their 'kick sample' monitoring of the River Loddon in April. The lampreys which were observed in the Basing House fishponds are spreading to the river and two tiny bullhead fry were also found.

Water Supply: You cannot build what you cannot supply.

OLD BASING SCOUT GROUP



The start of the summer term means one thing for the Squirrels, Beavers, Cubs and Scouts of Old Basing and Lychpit – BEASTLY!

BEASTLY is an annual activity day run for all young people who take part in the Scout and Guide movements in Basingstoke. This year BEASTLY was bigger than it's ever been before with over 2,000 young people attending supported by over 600 volunteers. Throughout the day the young people got to take part in over 100+ activities across five different zones.

In Adrenaline, there was the chance to try out Crossbows, Archery, Rifle Shooting and Tomahawks. This along with a myriad of inflatables and a special base run by Rugby Basingstoke really gave a chance for our young people to get their blood pumping.

Everyday Adventure provided opportunities to practise traditional Scouting Skills from Backwoods Cooking to Fire Lighting as well as the opportunity to play with their friends from Air Hockey to Skittles. As well as a chance to learn through doing by launching Water Rockets, trying to Lego Walk and even driving a digger.



Creative gave the young people the chance to flex their creative and problem-solving muscles. Between an Escape Room, Bell Ringing, Drumming, Rope Making, Weather Forecasters and much more there was plenty for them to get stuck in with.

Engagement featured external guests from the Fire Service, Police and Hampshire Scout Heritage amongst others allowing for the young people to learn more about what those people do and get up and close with some of their equipment.

Finally, Active featured Climbing, Zorb Football, Table Tennis, Bouldering, Chariot Racing, Badminton... the list goes on and on. This year the young people even got a taste of winter sports with both Curling and Ice Hockey joining the line up. All this combined with a special activity provided by Basingstoke Disc Golf it was hard not get involved and moving.

Overall, the young people of Old Basing Scout Group absolutely loved BEASTLY this year from the promise renewal to taking part in the activities to hanging out with their friends and meeting a few very special guests. But as usual when all was said and done there was only one question they were asking. When's BEASTLY27?

We are always looking for new people to join in the fun – young and old! If you're interested or want more information, then contact us by email group@oldbasingscouts.org.uk

You can also find us on Facebook, Instagram and LinkedIn at 'Old Basing Scout Group' where we post regular updates on what we get up to.



LUCY ROWLANDS FITNESS

- I'm Lucy Rowlands, Level 3 Personal Trainer
- Level 2 certificate in nutrition and health
- I offer 1-2-1 or small group training
- I can also come to your home



Mondays 10:30am
War Memorial Park,
Basingstoke

Wednesdays 10:30am
The Recreation Ground
Old Basing

Come along with your baby and buggy to get some fresh air, meet other mums and improve your fitness and mental health.

We walk and do strength exercises. Different options for all levels of fitness, from 6 weeks post partum.

Free trials available!

Contact Lucy: 07747000137
lucy@lucyrowlandsfitness.co.uk

W.T.HILL Painter & Decorator

Internal & External
Over 30 Years Experience
Tel: 07748808069
Free Quotations



Over 35 years experience in all types of domestic, commercial and industrial fencing

FREE estimates and advice with no obligation and good quality workmanship are GUARANTEED

CALL US 01256 358 940
www.bobberryfencing.co.uk

Brewers
DECORATOR CENTRES

Ennedi Khaki from the Albany
Fantasy Wallpaper Collection

Your choice for
paint and wallpaper
and the very best in free advice



138 Basingstoke Trade Park
Worting Road, Basingstoke
RG21 8BJ 01256 467373
basingstoke@brewers.co.uk

1 Whitney Road
Daneshill Estate, Basingstoke
RG24 8NS 01256 464745
basingstoke.east@brewers.co.uk

£10 OFF

When you spend
£100 or more

ZX520BSB

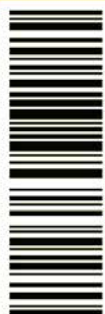


5019646988929

£20 OFF

When you spend
£50 or more

ZX510BSB



5019646988912

Valid until 31st December 2026 at Brewers Basingstoke only.
Terms and Conditions apply, ask in store for details.

| Are you looking for more control over your finances?

At S4 Financial, we have been providing bespoke financial solutions to our clients for 20 years, with a strong focus on cashflow modelling.

Using years of experience, and with the help of specialist software, we can develop a cashflow model to forecast what you'll need to do to achieve your financial goals, and how much you might need to save to reach financial independence.



| To find out more

VISIT:
s4financial.co.uk/basinga

CALL:
01276 34932

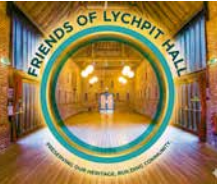
Unit A, Causeway Farm,
Cricket Green, Hartley Wintney,
Hampshire RG27 8PS



Where wealth meets wisdom

S4 Financial Ltd is an Independent Financial Advisory firm, which is authorised and regulated by the Financial Conduct Authority. S4 Financial Ltd is entered on the FCA register (<https://register.fca.org.uk/>) under reference 401372.

QUIZZES AND TALKS@LYCHPITHALL



Community entertainment continues with three more events before we all take a break for summer:

Saturday, 30th May – Fascinating facts about Winchester Cathedral. This will be the last talk before we recommence in September. Are you ready to step forward and deliver a future talk? If you can share your passion for a particular subject, taking around 45 minutes + 15 minutes for Q&A, we'd love to hear from you.

Friday, 12th June – quiz night

Friday, 17th July – quiz night

Talks: Arrive 7.15pm for 7.30pm start. Finish about 8.30pm. Bring friends, drinks, nibbles. Tickets **£2** per person. No booking required.

Quizzes: Arrive 7.00pm for 7.30pm start. Finish by 10.30pm. Bring friends, drinks, nibbles & table decorations. Tickets **£5** per person. Book your table for up to six people by emailing **fof.lychpit.hall@gmail.com**

Thanks to speaker Graeme for walking us back in time to the beginning of the universe and explaining how we evolved from Big Bang to today's cosmos. It is still so difficult to comprehend that, apart from hydrogen and helium, all the other building blocks of modern life come from exploding stars. It is also a wonder how scientists like Graeme can map the history of time and space.

Looking ahead at Lychpit Hall: While the sound system used for quiz nights and talks is top notch, our projector needed a refresh. Good news – we have a brighter and less obtrusive projector that will perform 'brilliantly' for quiz nights and Talks@Lychpit Hall. Enjoy a better brighter experience in future.



Volunteers at Friends of Lychpit Hall promote the use of our wonderful community hall and aim to secure it for future generations.

Email us at **fof.lychpit.hall@gmail.com**

Picture: Celebrating the third anniversary of quiz night with a giant birthday cake.

OLD BASING WOMEN'S INSTITUTE



The May meeting was our AGM, when we elected our committee and president for the following year. We were pleased that our current committee and president were all prepared to stand for a further year, which meant we could just get back to business as usual.

We have lots of things planned for the coming year, starting with a walk with Llamas, a garden visit and a visit to a local residential home. Members meet weekly for coffee, once a month for lunch and we have started a "knit & natter" group, hosted by various members in their homes. Members also meet once a month for a craft session.

We meet, **every first Tuesday** of the month at **7.30pm**, at the Parish Room, St Mary's church. Our next meeting is on **2nd June**, when our speaker will talk about cottage gardens. All are welcome to our meetings. Guests are offered two free meetings, so if you are interested and want to come and see if you would like to join our long running and thriving group. Please contact our President by email at **oldbasingpres@hampshirewi.org.uk**



GOLD & GREY

Your Local Help With

CURTAINS AND BLINDS

UPHOLSTERY

LOOSE COVERS

SOFT FURNISHINGS

HOME ACCESSORIES

INTERIOR DESIGN

FABRIC SALES

Call **Linn** On **01256 744051**

www.goldandgrey.uk



DKA Gardening Services

 **07788 413746**

 **info@dkagardening.com**

 **@dka.gardening**



About Us

At DKA Gardening Services, we take pride in creating and maintaining gardens that our customers love. From regular maintenance to complete transformations, our experienced team works with you to achieve the results you want.

Our Services

We provide a wide range of services to keep your outdoor space at its best:

- Garden maintenance
- Hedge cutting
- Fencing
- Landscaping
- Garden clearance & renovation
- Pressure washing
- Planting and plant care
- Commercial grounds maintenance



Scan to find out more

CONTACT US

Call or email today!

www.dkagardening.com

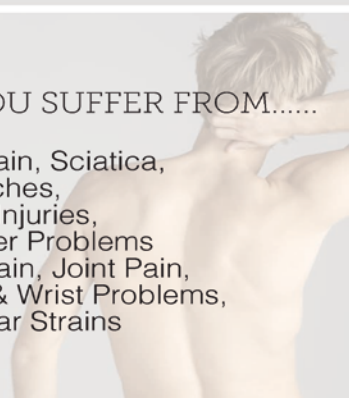


LOUISE SANDERS
OSTEOPATHS

- Free car park
- Emergency appointments
- Home visits
- Free advice on rehabilitation
- Free advice on exercises
- Free ergonomics advice

DO YOU SUFFER FROM.....

- Back Pain, Sciatica,
- Headaches,
- Sports Injuries,
- Shoulder Problems
- Neck Pain, Joint Pain,
- Elbow & Wrist Problems,
- Muscular Strains



OLD BASING

Old Basing Health Centre,
Manor Lane

Old Basing | Hampshire | RG24 7AE
07798 587150



07704 513000

Friendly, experienced and local for all your
Plumbing & Heating needs!

Bathrooms installations. Water softeners. Boiler repairs/
replacements. Services. Gas safe landlords checks.
System cleanses. Outside taps. No job too small.

0771 721 4521 01256 412723

E: info@jcooklandscapes.co.uk

www.jcooklandscapes.co.uk

J Cook Landscapes



Garden Design & Build, Patios,
Decking, Fencing, Turfing, Planting,
Driveways, Artificial Grass, Tree work,
Garden maintenance & Clearance

Professional Service - Fully Insured - 20 Years Experience



Hampshire's Most Rated Electricians



Residential Electricians



Commercial Electricians



Inspections & Testing



Approved Contractors

All Domestic and Commercial works carried out

We have a team of friendly, customer-focused electricians who are trustworthy, punctual and have a combined 35 years of experience between them!

5 year warranty on labour!

Call our dedicated customer support line

01256 473326

info@gusolutions.co.uk
www.gusolutions.co.uk

Rated 9.9/10 on over
1,100 reviews on [Checkatrade.com](https://www.checkatrade.com)



L TITCOMBE & FAMILY

Independent Funeral Directors & Memorial Consultants

Personal, respectful and attentive service

A family run funeral director's providing a personal, caring and attentive service.

All types of funerals arranged including direct cremation and eco-friendly burials.

Funeral finance can be arranged.



We are here when you need us most

24 hours a day, 7 days a week

All aspects of Funeral Arrangements undertaken

21a High Street, Overton RG25 3HB Tel: 01256 771 510
4 Elmwood Parade, Basingstoke RG23 8LL Tel: 01256 476 366
8 Swan Street, Kingsclere RG50 5PJ Tel: 01635 299 900

www.tmfunerals.co.uk



OLD BASING AND LYCHPIT GOOD NEIGHBOURS

It is with great sadness after 10 years of helping our community, that we have to inform you that we are no longer able to operate: fewer clients, fewer volunteers, increased costs of insurance etc has made it uneconomical to continue. We have loved meeting and helping everyone and have always appreciated both your generosity with your donations and the thanks we have received.

Just to let you know **Neighbourcare** operate a very good service on a much larger scale and therefore help is not lost, their telephone number is **01256 423855**.

Thank you once again. Kind regards, **Sue Wilson** (Chairman)

WHAT'S ON ADVERTS

PLOUGHMAN'S LUNCHES

Ploughman's Lunches take place in the **Parish Room of St. Mary's Church** on the third Thursday of the month, except August when we have a break. **Booking is required** by phoning: **07946 596778**. **Doors open at 12.25pm** and there is no end time. This month's lunch is on **Thursday, 18th June**, and the following lunch on **Thursday, 16th July**.

RBL WOMEN'S SECTION – FORTHCOMING EVENT

Saturday, 13th June from **2.00 to 4.00 pm** in the Royal British Legion Hall.

"Bring your own bag sale". Pay **£5.00** at the door and go round the stalls and fill your own bag. Items for sale include: jewellery, books, jigsaws, bric a brac etc.

Refreshments will be available.

OLD BASING ROYAL BRITISH LEGION
CROWN LANE, OLD BASING, RG24 7DN
4th JUNE 2026 7.30PM START

We are pleased to invite you to our social meeting to hear a presentation by Dan Turner from Hampshire Police. Dan is looking to make contact with local veteran's groups to promote awareness of the Forcer Protocol.

All are welcome whether an RBL member or not, so please do spread the word.



WELCOME TO THE FORCER PROTOCOL
"When the guns go silent, that's when the battle begins."



SUPPORTING VETERANS AND ARMED FORCES PERSONNEL WHEN THEY GO MISSING.


The Forcer Protocol is a life-saving preventative measure for UK veterans and serving personnel, including reservists. It shares vital details, including health conditions, triggers and safe places, and if you're ever reported missing, it can help speed up the search and help you access the right support. Born from lived experience and built with UK forces and veterans in mind, the Forcer Protocol is rolling out nationwide.

Named in honour of Alan Forcer, a veteran who tragically took his own life, the protocol was created to ensure that no one who has served our country is left without rapid, compassionate intervention during moments of acute mental distress.


RAPID, COMPASSIONATE INTERVENTION WHEN IT'S NEEDED MOST

SAVING LIVES, ONE MISSING PERSON AT A TIME.

The Forcer Protocol is a UK-wide public initiative to help locate and protect serving or ex-service personnel (veterans and reservists) who go missing.



National Trust



Walking in Stanley's Footsteps

2nd May, 5th June, 19th September 2026
Free guided 3 mile walk in Burghclere on local footpaths with gates and a footbridge. The guide will reveal the places and moments that inspired Stanley's celebrated paintings. This engaging and interactive tour will last approximately 90 minutes. It is not suitable for wheelchairs or pushchairs.

To book your place or for further information email sandhamevents@nationaltrust.org.uk

nationaltrust.org.uk/sandham-memorial-chapel

FREE-ADS – BUY AND SELL

Note: All ads are processed in received date order. Ads not included this month will be entered in the next issue, space permitting. If you do not want your ad to appear later, contact the Advertising Manager (see page 34 for contact details). Ads also appear on the website: www.basinga.org.uk (with photographs if available).

WOODEN PLANTER £80 07801205856

Rectangular Raised Wooden Garden Planter. FSC Treated Timber. Ordered in Error. 8ft by 4ft by 1ft 6inches high Suitable for an older gardener but can be constructed into 3 smaller beds. Cost £108. Would like £80 ono.

STORAGE BOXES FREE 07867576149

Two Brown lightweight storage boxes, 11" w x 14"l x 5½"d. Suitable for paper files, documents etc..

CHINEHAM REPAIR CAFE

On the **third Saturday** of the month, **Repair Cafe** takes place in Christ Church, Chineham, on Reading Road between **10.00am** and **1.00pm**.

Repair Café teaches people to see their possessions in a new light. And, once again, to appreciate their value. Repair Café helps change people's mindset. This is essential to kindle people's enthusiasm for a sustainable society. But most of all, Repair Café just wants to show how much fun repairing things can be, and how easy it often is. Why don't you give it a go? Website: chinehamrepair.org.uk



St Michael's Hospice

Big Wheel

Sunday 14 June 2026
War Memorial Park, Basingstoke

Join the Journey, Support the Cause

Pick your distance

- 9.5 miles
- 23 miles
- 57 miles
- 78 miles

Little Wheels Children's Lap
Pedal or scoot around the park!



Scan the QR code to sign up now!

Find out more: stmichaelsospice.org.uk/big-wheel

FRP
REGULATOR

Charity Reg No (England and Wales): 1100996 | Tel: 01256 88884
St. Michael's Hospice, Basil de Ferranti House, Aldermaston Road, Basingstoke, RG24 9AG



BMVC
Basingstoke Male Voice Choir

Sounds of Summer

A concert by the Basingstoke Male Voice Choir

7:30 pm on Saturday 6th June

All Saints Church, Southern Rd, RG21 3EA



Doors open at 7:00 pm

Tickets £12:00 from Ticket Source:
<https://www.ticketsource.co.uk/bmvc>



<https://basingstokemvc.org.uk>

TEAMWORK

As we continue searching for a new vicar, I am often asked, “what kind of vicar would you like?” My answer is always “someone I can work with.” This might seem like ducking the question, but my experience that I work well with the most surprising people when we have complementary strengths – that is we are both good at different things.

On my mind were the local council elections, where we elect people to represent us in running our town and county. I also had to prepare a reflection on Numbers chapter 12 where the leadership of the Israelite exiles is called into question. In theory, they were a great team – Moses, the devout man who was closest to God and understood what God wanted; Aaron – the great public speaker, who could find the words to spread that knowledge to the people, and Miriam, whose passion and spirit could rally the people behind them. But when they started to doubt each other, it all started to fall apart, and God had to intervene.

The Reverend Helen and I are lucky at St Mary’s that we have complementary strengths and are supported by a wonderful team of volunteers whose help over the last year (especially Easter) has been remarkable. That’s what makes me confident that we will find the right vicar to join us (although they are bound to surprise us and be different from what we expected!).

Likewise, we should hope and encourage those who are elected as councillors to find their strengths and work effectively with others, even from different political groupings. And we might also hope that they surprise us in a positive way.

Colin

LETTER TO THE EDITOR...

Dear Editor,

A huge thank you to everyone who supported me at the ballot box. It’s a real privilege to continue serving our community, and I’ll keep working hard for every resident, whether you voted for me or not.

I’m especially grateful to my fantastic campaign team, deliverers, friends and family who gave up so much time and energy over the past few weeks. We’re also lucky to have such a strong local leader in Cllr Paul Harvey.

On the doorstep, residents spoke passionately about protecting our precious chalk streams, and I’m determined to turn the Rights of Rivers Declaration into real action for the River Loddon, the River Test and our local tributaries.

We are heading into uncertain and potentially messy times with local government reorganisation, but one thing will not change: we will always put residents first. People, not politics. Please do get in touch if I can help with any local issues.

Kind regards,

Kate

Cllr Kate Tuck, Basing & Upton Grey Ward, Cllr.kate.tuck@basingstoke.gov.uk

ST. MARY'S CHURCH

REGULAR SERVICES

Sunday	8.00am	BCP Communion
	9.30am	Sung Eucharist
Monday	8.45am	Morning Prayer
Tuesday	8.45am	Morning Prayer
Wednesday	10.00am	Holy Communion
Thursday	8.45am	Morning Prayer
Friday	8.45am	Morning Prayer

St Mary's
Parish Church



All are welcome to join us – please just come along. If you'd like to join the 9.30am Sunday service from home, you can do so via St Mary's Facebook page. You can keep up to date with services and events at St Mary's Church via our Facebook page or visit our website: www.stmarysoldbasing.org.uk

ROOM HIRE

St Mary's enjoys welcoming various community groups to St Mary's including Drama Tots, Basing Singers, The Alzheimer's Singing for the Brain, Total Recovery Pilates and U3A. If you'd like to know more about any of these groups please do get in touch with Debbie, St Mary's Administrator (details on back page).

The room has a fully equipped kitchen and is also available for private hire, including children's birthday parties and family celebrations.

OVER 60'S EXERCISE CLASS

We have recently received an enquiry about the possibility of hiring the room for an exercise group for over 60's – Move It or Lose It. If this is of interest please contact Debbie

LETTER TO THE EDITOR...

Dear Editor,

I wonder if I might borrow a little space in the Basinga to make a small (and I hope friendly) plea on behalf of Sunday morning sleepers, coffee sippers and general enjoyers of peace.

Our village has long observed an unwritten but much loved tradition that Sundays start quietly, with lawn mowers, trimmers and other enthusiastic pieces of garden machinery remaining tucked up in their sheds until at least 10.00 am. It's a custom that many of us treasure, giving Sundays a slightly softer start than the rest of the week.

Recently, however, a few keen gardeners seem to be getting a bit of a head start, and while their dedication is admirable, the drone of an engine before breakfast can be a bit of a shock to the system. Birds, kettles and the pop of the Toaster feel much more in keeping with the mood than petrol-powered enthusiasm.

So, may I gently remind everyone of the traditional Sunday 10.00 am rule? It's a small courtesy that helps keep smiles on faces and the village atmosphere as calm and friendly as ever.

With thanks to all considerate gardeners — and to the editor for indulging this request.

Yours cheerfully,

A neighbour who loves both lawns and lie-ins

WATER SOFTENERS

AMS LTD

Water softener repairs (all makes)
No call-out charge
Can fully recondition with a guarantee
New softeners supplied and installed
10 years guarantee

E-mail: info@amsmayfair.co.uk

Tel: 01256 768171 • Mob: 07836 247694

GMK

Decorating Services

INTERIOR • EXTERIOR • PLASTERING

Friendly Prompt & Efficient Service

Over 25 Years Experience

Fully Insured

Call Gary On:

(01256) 329138 07767446834

To advertise here contact
advertising@basinga.org.uk

LEWIS

HEATING & PLUMBING



We are a local reliable family business and strive to provide outstanding customer service & workmanship;
Endorsed by Which Trusted traders.



Telephone: 01256 413716

Mobile: 07804 030889

email: mark.lewis97@ntlworld.com

web: lewisheatingandplumbing.co.uk

B&M FENCING

GARDEN & LANDSCAPE SUPPLIES

Panels
Trellis
Concrete Post
Closeboard Panels

Reclaimed Sleepers
Softwood Sleepers
Oak Sleepers
Decking

Loose Aggregates / Bulk Bags

Natural Sandstone
Porcelain paving
Paving Slabs
Block Paving

Turf
Topsoil
Landscape Bark
Compost

Sharp Sand
Building Sand
Ballast
Mot Type 1

10mm Gravel
20mm Gravel
Grano Dust
Decorative Stone

Mon-Fri
7.45 – 5pm

Fencing
Fitting Service
Free Estimates

Block Salt
Tablet Salt
Calor Gas

Delivery Available

01256 762739

www.bmfencing.co.uk

enquires@bmfencing.co.uk

Reading Road, Hook, Hants, RG27 9DB



CHURCHYARD CONSERVATION GROUP (PIOCC)



This month's working party will be on **Saturday, 6th June** at **10.00am**. There will be no Thursday working party this month. Meet by the PIOCC noticeboard. We will continue the summer season maintenance to encourage the wild flowers and associated wildlife. All are very welcome, both our regular volunteers and new participants. We would like to thank those who have recently joined

us for continuing their support. We are a community project, not just for churchgoers. Our volunteers make a real difference. Just turn up in gardening clothes and bring gloves. The tools are provided. Our Saturday morning sessions last about three hours (with a coffee break and chance to relax).

It is with sadness that we have accepted the resignation from our Committee of Fay Farrant, a founding member of PIOCC. In the early years a committed member of our working parties, also serving as a staunch committee member and leader encouraging us all to keep going. She has had many roles in the Committee and chaired us for many years.

We hope you enjoyed the events at last month's Summer Festival and visited our nature trail. As mid-summer approaches walking around the churchyard is an experience of discovery and revelation. Look for bugs, grubs, insects, bumblebees and butterflies. They love the flowers in the Central Glade. See what you can find, or sit on the WI seat, relax peacefully and allow the healing peace to soothe. Everyone is welcome to enjoy this area.

For further information please email Tim Carr, Chairman: tim@tmcarr.net

Margaret Carr www.stmarysoldbasing.org.uk

OLD BASING AND LYCHPIT VILLAGE SHOW

Hopefully you have your copy of the 2026 Show Schedule by now. If not, it's available for download from our website www.oblvs.org.uk and hard copies are available at the Village Store, the Co-op or from a committee member. And don't forget we now have our own **Facebook** page which you can find by searching for **OldBasingLychpitShow**.



The **Children's Section** includes a new class named "Paddington". It could be a model, a photo, a painting, anything. The exhibits should be the children's own work. However, adults can help the children to stage their entries on Show day.

We're pleased that the Infant School Head Teacher, Sonia Denning, will be presenting the children's prizes this year, and Mark Lane from Lane Monnington Welton, Chartered Accountants, will be presenting the other awards.

Children receive a small packet of sweets for each of their entries and, as well as cash prizes, each first, second and third prize winner is given a rosette. There's a certificate for the winner of each of the children's classes and two children's cups, one for best entry and one for the child with the most points.

Show day is on **Sunday, 6th September** and we look forward to welcoming visitors, entrants and seeing lots of entries on the Show benches again this year.

THE OLD BASING ROYAL BRITISH LEGION SOCIAL CLUB

Club Membership is open to all not just the services community.

The club offers:

- **Fully Licensed Bar** – Enjoy a wide range of Beers, Wines and soft drinks with an extensive range of 35ml spirits on offer, all at great discounted member prices.
- **Sky and TNT sports** – watch live sports on our big screens in a lively, friendly atmosphere. Live entertainment – From quiz nights to themed nights, race night, discos and tribute bands.
- **Function Hall Hire** – Our spacious hall is available for Birthdays, Wedding, Christenings, Wakes etc.
- **Team events** – The club has active Darts, pool and snooker teams. We are always looking for new team members or just enjoy a casual game with friends.
- **Community events** – Supporting the Royal British Legion and Poppy Appeal throughout the year.
- **Large free car park.**



Upcoming events:

- **Meat raffle – Saturday, 5th June 7.00pm.** Purchase your tickets at the club.
- **Monthly Quiz night.** For more details please see our Facebook page
- **Carnival skittles – 1st, 8th and 18th June.** Teams of six. Please get your team entered. Always good fun.
- **All Football World Cup games** will be shown throughout the tournament. Please come and watch and join in the entertainment.

Find us: Located in the heart of Old Basing in **Crown Lane.**

Contact us: **07437016815** or

email us: **secretary@obrbl.club** or

Follow us: Facebook – **Old Basing Royal British Legion Social Club**



NEWS FROM BASING HOUSE



Basing House, is currently open, **Wednesday to Sunday, 11.00am to 4.00pm**. The site closes for the winter in October and reopens at Easter. The admission fee covers a calendar year, including some events.

Basing House is a ruin in large grounds, with a ten-minute riverside walk (usually complete with ducks) from our free car park near Barton's Mill pub to the site. The path from the car park is well worn compacted gravel, and the site is mostly grass, so think about your shoes! Events included in the ticket include **Rhyme Time**, aimed at preschool children and held **every Wednesday** for an hour from **11.00am** and guided tours **every Wednesday** at **1.30pm**, with a volunteer guide bringing the fascinating history to life in a relaxed one to one-and-a half hour tour.

Much more specialist tours are led by Basing House expert **Alan Turton** on **Sunday, 14th June** and **Sunday, 5th July**. There is a charge for these, which is on our website (below).

A variety of craft courses are run during the season, and the next few are listed below:

- **Willow Platter Workshop: Thursday, 4th June, 10.30am and 1.30pm**
- **Drawing from Nature: Thursday, 18th June, 10.00am to 4.00pm**
- **A Complete Introduction to Felt Making: Wednesday, 24th June, 10.00am to 4.00pm**
- **Watercolours - Spring, Flora, Fauna - The Spring Landscape: Saturday, 27th June, 10.00am to 4.00pm**
- **Copper Butterfly Wreath Workshop: Thursday, 2nd July 10.00am**
- **Screen Print Workshop - Learn to Print a Natural Landscape: Wednesday, 15th July 10.30am**

Further ahead, there will be craft activities on **Wednesdays, 11.00am to midday** through the school holidays and a visit from the **Rock Choir** on **9th July**, from **6.00pm**. More details in the next Basing or on the website, but both are free to ticket holders.

Fuller information about these events can be found on our website. Search for '**Basing House, Old Basing**'.

Andrew Howard 01256 327014

SEBASTIAN'S ACTION TRUST



Sebastian's Action Trust exists to support families caring for a life-limited or life-threatened child across Hampshire, Berkshire and the surrounding communities, offering care, community and moments of joy when they're needed most.

On **Sunday, 14th June**, from **1.00pm to 4.00pm**, we'll be hosting a summer fete-style open day at **The Bluebells**. The day will include stalls, games, face painting, and refreshments, along with the opportunity for visitors to look around the house and learn more about the support we provide to local families.

For more information about this event and to find out about the work of the Trust, please visit their website: **sebastiansactiontrust.org**

VILLAGE VIBES CAFE

How can we be half way through the year already! I'm hopeful for a long warm summer full of sunshine and happy times for all.

A big shout out to "The Potential", the amazing band who played all night long and a very big thank you to all our supporters who donated raffle prizes. The whole organisation team behind this event, the helpers and bar staff on the evening, were all brilliant, so I have to say a massive thank you to you all, what a team!



Village Vibes café will be open until 14th August on **Friday afternoons** from **2.00pm to 4.30pm** at the **Pavilion Room** located at the **Recreation Ground**. We will then be taking a much earned break but will open again in September.

Opening dates are:

- **5th, 12th and 26th June**
- **3rd, 10th, 17th and 31st July**
- **7th and 14th August.**

The community bus will be running to the café on **12th June, 17th July and 14th August.**

We will be having a Pimm's summer afternoon on **12th June**, and some lovely summer bakes so come along and join us. You can even take the community bus, free of charge and chill with a nice glass of Pimm's, what could be better on a summer afternoon.

If anyone is interested in joining our fabulous team of bakers and baristas, do get in touch via our Facebook page or speak to one of us in the cafe, we always welcome new members with open arms. You do not have to commit to baking or helping weekly, as we operate on a rota basis so you are free to choose dates to suit you.

Deborah Thorne

NATIONAL WOMEN'S REGISTER



Have you just moved to a new area? Have your children recently left home? Have you experienced a major life change, or would you just like some more friends? Come and meet other women at NWR to share thoughts, life and experiences. Enjoy stimulating conversations and, often, some great cake. NWR provides a wide range of talks and activities in small local groups of, typically, fewer

than 20 members. Each is unique, arranging activities and meetings to suit their members.

Chineham and Old Basing NWR meets at **2.00pm** on the **first Monday of the month.**

We have a monthly lunch at local venues on different days, and a book group that meets on the fourth Thursday of the month. This month's subject is "**Made in Basingstoke**" where we will be finding out about some lesser known products, inventions or notable people and their achievements. New members are very welcome.

For more information see the website www.nwr.org.uk or if you feel you would like to join our friendly group please contact Diane at diane.hope@tiscali.co.uk or **07771898733.**

A. SEWELL

www.asewell.co.uk



Lighting, Electrical & Audio Visual

All Lighting and Electrical work undertaken including:

- Security & Emergency Lighting
- Interior & Exterior Lighting Design & Installation
- TV, Telephone and Data Distribution
- Multi-room Audio/Visual
- Alarm Systems, CCTV & Door Access Systems
- Electrical Alterations & Re-wires



01256 329893

01252 844663



COVENEY PLUMBING SERVICES

For everything from a dripping tap to
bathroom install.

Contact at 07901 556785 or

info@coveneyplumbingservices.com

Basingstoke local

Weller Mackrill

Chartered Certified Accountants and Tax Advisers

Accounts - Tax & VAT Returns - PAYE & CIS - IR35 advice
Company formations - Tax planning - Free initial consultation

Weller Mackrill, South Building, Upper Farm, Wootton St Lawrence,
Basingstoke. RG23 8PE

For a friendly and sensibly priced service

Please ring 01256 782059

E-mail:

paul@wellermackrill.co.uk

james@wellermackrill.co.uk



OLD BASING VILLAGE HALL

*Whatever your function needs
your
Village Hall can meet them.*

Contact: Booking Secretary

Mobile: 07544 289932

Email: bookings@oldbasingvillagehall.co.uk

Heartsmith Property Services



**From odd jobs and small fixes to
standout features**

Media Walls

Panelling

Painting and Decorating

Flooring and Skirting

Door Hanging and Architrave

Radiators

Taps and Toilets

Small Repairs

And More...

Get in touch today for a free quote



heartsmithpropertyservices@gmail.com

+44 (0) 7518 303175

RIDTEK Pest Control

Domestic, Commercial and Agricultural



Independent family business
Wasps nest removal, rat control,
hornets, mice and more.

01256 332 775
info@ridtek.co.uk



WE'RE MORE THAN JUST A LEAKY TAP



Boilers

Installations
Servicing
Breakdowns



Bathrooms

Cloakrooms
En-suites
Shower rooms

Plumbing



Taps
Toilets
All plumbing jobs



Contact us for a FREE estimate



info@catlinph.co.uk • 07774 741021

Industrialware

Carpentry & Joinery

www.Industrialware.co.uk
0770989962

need a **painter** and **decorator**?



- professional
- friendly
- affordable
- experienced
- reliable
- fully insured

call us today for a free no obligation quote

01256 334852 07919 358050
pscdecoratingservices@gmail.com



Back, Neck or other MSK Pain?
Experienced Professionals who Listen
Gordon and Annette Linscott
www.spineteam.co.uk 01256 466 666



Tree Surgeon

01256 763859

07766 256788

TreeSceneArb@gmail.com



- Adrian Stanley**
BSc(Hon) AA Tech Cert
- All aspects of tree work & stump grinding
 - Fully insured (£5m) - free estimates
 - Logs supplied
- Qualified & experienced arborist

YOUR GARDEN IN JUNE



June is one of the busiest and most rewarding months for gardens in southern England. Growth accelerates, pests appear, and warm-weather crops finally take off.

Flowers & Borders: Deadhead roses, peonies, and early summer flowers regularly to keep blooms coming. Tie in climbing roses, sweet peas, and clematis before growth gets unruly. Cut back hardy geraniums and other sprawling perennials after flowering for a second flush. Sow biennials like foxgloves and wallflowers for next year. Plant out tender annuals once nights stay mild. Stake tall plants such as delphiniums, dahlias, and lilies before

wind damages them.

Vegetable Garden: Plant out tomatoes, courgettes, pumpkins, sweetcorn, and runner beans. Earth up potatoes as stems grow. Sow lettuce, radish, beetroot, carrots, dwarf beans. Net brassicas against cabbage white butterflies. Pinch out tomato side shoots on cordon varieties. Water greenhouse crops consistently to prevent blossom-end rot and splitting. Harvest strawberries, early potatoes, salad leaves, peas, broad beans.

Fruit Garden: Thin apples and pears if trees set heavy crops. Net soft fruit before birds strip them. Summer prune trained apple and pear trees later in the month. Feed container blueberries and citrus with ericaceous feed. Peg down strawberry runners if you want new plants.

Lawn Care: Mow weekly (or more often during wet spells). Raise mower height in hot dry periods. Feed lawns if not done in spring. Spot-weed or hand-weed rather than blanket spraying in hot weather. Trim edges to keep borders tidy.

Greenhouse & Containers: Ventilate greenhouses daily — greenhouses can overheat quickly in June. Shade glass during a heatwave (if that should ever happen). Feed hanging baskets and containers weekly. Water pots thoroughly; windy days dry them fast.

Watch out for aphids, red spider mite, whitefly, slugs/snails.

Wildlife & Maintenance: Leave some areas slightly wild for pollinators. Put out shallow water for birds and hedgehogs during dry weather. Weed little and often — easier than tackling overgrown beds later. Turn compost heaps to speed decomposition. Mulch borders to retain moisture if conditions become dry.

If You Only Have One Weekend: Weed borders and veg beds; Mulch and water deeply; Tie in/support fast growth; Plant out tender veg and flowers; Feed containers and tomatoes.

The following websites give good gardening advice throughout the year, some are commercial companies who supply seeds, plants and tools via mail-order:

BBC Gardener's World

www.gardenersworld.com

Thompson & Morgan

www.thompson-morgan.com

Gardening Express

www.gardeningexpress.co.uk

Marshalls Garden

www.marshallsgarden.com

Royal Horticultural Society

www.rhs.org.uk

Dobbies Garden Centres

www.dobbies.com

Hillier Garden Centres

www.hillier.co.uk

Gardening Direct

www.gardeningdirect.co.uk

NATURE NOTES FOR JUNE

As I write in early May, we really start appreciating the lovely changes that Spring brings. There are a whole multitude of shades of green to see, with every seasonal flower or shrub bursting out its colour. It certainly seems that everything has come into bloom a week or two earlier and one BBC South report from Exbury gardens was that the azaleas and rhododendrons were all out during April, scuppering the number of paying customers that traditionally book time off in May to see the stunning array of colour.

Many of you will have had birds nesting in your garden and hopefully young Blackbirds, Robins and Dunnocks for example have or are about to fledge. Although we didn't see them go, a Robin box that was very active for a few days has now gone quiet and a quick peek revealed an empty nest. I do worry as Magpies frequent the garden every day and I know they've been responsible for taking the young before but there was no sign of a disturbance this time. Blue Tits have been incredibly busy in and out of one of the boxes in our eyeline, (sadly not the camera box) so again we are keeping our fingers crossed for a safe departure there.

Now friend and reader Graham Caddell has had success in his camera next box, and he tells me that this is about the sixth successive year. Monitoring the process from when nest material started to appear in late March, Graham commented that everything seems to be going smoothly. There's a new record in the offing too as there are ten chicks here, and this great shot (*right*) shows both parents feeding the brood at the same time.



After one cute picture, here is another that would melt the heart of the hardest of men. The Millfield wildlife team were recently working on the local Dormouse monitoring project and were rewarded by finding a number in the boxes, many still asleep in their hibernation state. Trainee conservationist Mike Wall is photographed here with one such example and as you can see, it's a job that gives much pleasure!

Jim Andrews, who took the picture (*left*), also conducted a dawn chorus walk on the Millfield on 24th April,

a day that had a very chilly start but eventually became sunny and warm. A dozen souls came along to listen, and sometimes see, a decent variety of songsters including Song Thrush, Wren, Robin, Chiffchaff, Blackcap and Whitethroat. The latter two birds have similar babbling calls but as Jim educated us, the Whitethroat sounds as if he has a bit of a sore throat with its rasping scratchy song. It's a good showy bird too and here is one.



Rick Bourne

Don't forget to send all your nature related stories and photos to rickbourne@yahoo.com or naturenotes@basinga.org.uk

*For all your bird food requirements, order from me at 'Bird Drop-ins' use the former email address or ring/text me on **07900 648675** to place an order or get a form.*



WESTPORT GREY

BUILDING CONTRACTORS

01256 636511

Extensions | Loft Conversions | Renovations | New Builds



WWW.WESTPORTGREY.CO.UK

Westport Grey Ltd. - Registered in England - No. 6216684

BUILDING YOUR DREAMS

Aarons Garden Services

- Tree/Hedge Care • Fencing Repaired
- Grass Cutting • Strimming • Patios Pressure Cleaned
- All Garden Rubbish Cleared • Free Estimates

Registered Waste Carrier

07721015248

aaronsgs1951@gmail.com

Lee Quinlan

Bathroom & Kitchen Fitter

"You buy it and I'll fit it"

All associated work undertaken:
Plumbing, Tiling, Plastering, Flooring,
Woodwork & Electrical.

tel: 01256 811830

email: enquiry@leequinlan.co.uk

web: leequinlan.co.uk

The Complete Tree Service



- Residential & commercial work
- Tree removal, thinning & lifting
- Scrub clearance & hedge trimming
- Stumps removed

Fully trained & certified staff Health & Safety focused
£10m Public Liability Insurance 30 years experience

We guarantee we can help. Call for professional, friendly advice...

Teams all over Hampshire, Surrey, Sussex & the South:

01256 763 162

Visit our website for images, video footage,
client lists and more:

www.cedardale.co.uk

Checkatrade.com
Where reputation matters




 Showroom
 The old Station Andover Rd Oakley Basingstoke RG23 7HA
 Tel: (01256) 782070
 OPEN 9am - 5pm MONDAY - FRIDAY
 CLOSED WEDNESDAY SATURDAY 10am - 3pm



☺ SERVING BASINGSTOKE FOR 40 YEARS ☺

CARPETS, VINYL, WOOD, LAMINATE, BEDS, DINING SETS, LOUNGE FURNITURE, BEDROOM FURNITURE, STUDY FURNITURE.




If you want FURNITURE and you want it FAST call in and see it, feel it and take it away today or use our FREE local delivery service




**CARPET EDGING SERVICE CARRIED OUT IN OUR STORE
 ORDER RUGS ANY SIZE TO SUIT YOUR ROOM**
www.oakley-furnishing.co.uk

DONATE TO BASINGSTOKE FOOD BANK AND HELPING DOGS & CATS RESCUE UK



Containers are located at the entrance to St Mary's Church

Items in short supply can be found at:
basingstoke.foodbank.org.uk



NJP Heating Services

0% finance

on all Worcester Bosch boilers

complete with up to 10 year guarantees on all Worcester Bosch boilers and controls

Contact us today for your free quote

07717 741999 or 01256 782202

nick@njpheating.com | njpheating.com

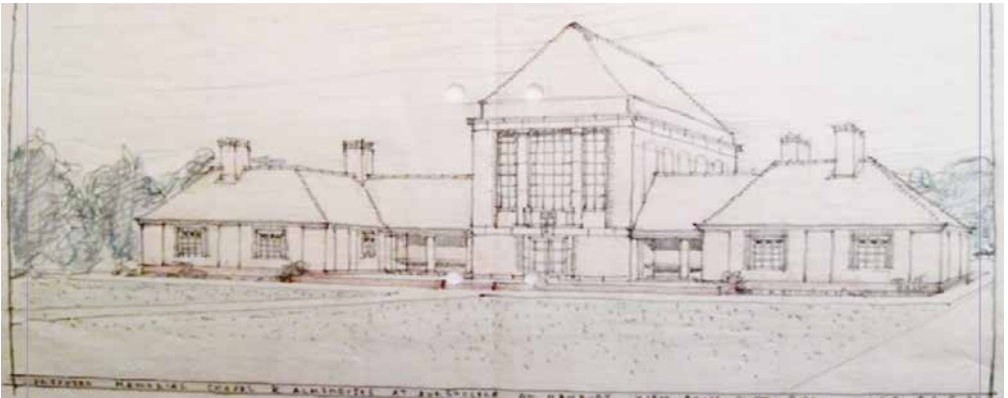




Centenary Exhibition at Sandham
Memorial Chapel, Burghclere
Wednesday 4th June to Sunday 8th
November 2026

As part of the centenary celebration's visitors are invited to explore a special exhibition '**Just like a box: realising Sir Stanley Spencer's vision**'.

The Chapel is best known for the 19 paintings created by Sir Stanley Spencer following the First World War, but what about the buildings itself? Visitors often wonder whether the paintings were designed for the building, or the building for the paintings? In truth – the two are inseparable.



This new exhibition shines a light on the often overlooked importance of the Chapel's design and construction including the adjoining Almshouses and traces the journey from initial idea to final realisation, revealing art, architecture and purpose coming together.

At its heart is the complex and sometimes challenging collaboration between Spencer, his patrons, John Louis and Mary Behrend and the architects. Spencer's artistic vision did not always align with practical constraints or available funding, leading to creative tensions along the way. All of this unfolded in the sensitive atmosphere of the early post-war years, adding further depth to the story.

Plan your visit

The exhibition runs from **Wednesday, 4th June to Sunday, 8th November, Thursday to Sunday, Bank Holiday Mondays and Wednesdays in June, July, August and September**. National trust members can visit for free; normal admission applies for non-members.

Whether you are drawn by Spencer's paintings or curious about the story behind the building, this exhibition offers a fascinating new perspective on a unique and moving place.

Harts Lane, Burghclere, Hampshire, RG20 9JT

www.nationaltrust.org.uk/sandham-memorial-chapel

01625 278394

DIARY DATES FOR JUNE 2026

For details of services and events at St Mary's Church please see page 19

June

Mon 1	7.30pm	First round of Carnival Skittles, Jack Morris Hall, RBL.
Tue 2	7.30pm	Parish Council Meeting at the Recreation Ground.
	7.30pm	Old Basing WI meet in the Parish Room, St. Mary's Church.
Thu 4	10.30am / 1.30pm	Basing House – Willow Platter Workshop. See page 23.
	7.30pm	RBL Meeting. We have booked a speaker, Dan Turner, who will talk about the Forcer Protocol - a scheme set up to work with the Police to help find missing veterans. p16.
Fri 5	2.00pm – 4.00pm	The Welcome Cafe at St. Mary's Church. Also on 19th.
	2.00pm – 4.30pm	Village Vibes Cafe at the Rec. Also on 12th and 26th.
Sat 6	10.00am – 1.00pm	PIOCC Working Party meet at the Noticeboard.
Mon 8	7.30pm	Second round of Carnival Skittles, Jack Morris Hall, RBL.
Wed 10	6.00pm	Deadline for July Basinga copy to Editor. See page 3 for details.
	7.45pm	BDRS Meeting. Rhatische Bahn Revisited by John Fissler.
Sun 14	1.00pm – 4.00pm	Sebastian's Action Trust Open Afternoon. See page 23.
Thu 18	10.00am – 4.00pm	Basing House – Drawing from Nature. See page 23
	7.30pm	Final of Carnival Skittles, Jack Morris Hall, RBL.
Sat 20	10.00am – 1.00pm	Repair Cafe at Christ Church, Chineham. See page 17.
	noon – 4.30pm	Old Basing and Lychpit Carnival. See page 5.
Wed 24	7.45pm	BDRS Meeting. London's DLR by Paul Ebbutt.
Thu 25	7.30pm	RBL Women's Section General Meeting – A sun hat.
Sat 27	10.00am – 4.00pm	Basing House. Watercolours - The Spring Landscape.

July

Tue 7	7.30pm	Parish Council Meeting at the Recreation Ground.
-------	--------	--

BASINGA EXTRA

Have you ever tried looking at the online version of the Basinga? **Basinga Extra** is found at www.basinga.org.uk and has all you find in the printed version but even more local information and articles. You can find old editions of the Basinga going all the way back to 2018! The following articles, that we unfortunately couldn't find room for in this printed version of Basinga, can be found there.

Hampshire and Isle of Wight Wildlife Trust – Skylarks.

Basingstoke and District Railway Society. Citizen's Advice Bureau – Renters Rights

PROBUS – Black Broadcasting.

Parish Council Report – full text.


TRILBYS
 OLD BASING



BOOKINGS AVAILABLE ON
www.trilbysbarbershop.nearcut.com
 01256 357333

GENTS AND LADIES HAIRDRESSERS
 CASH & CONTACTLESS ACCEPTED

FREE PARKING
 44 BELLE VUE ROAD, OLD BASING, RG24 7JU

 **LFM**

07776 303791

0800 246 1223

**The Boiler & Bathroom
 Replacement Specialists**



GARDEN SOLUTIONS
NEIL INKLEY

SPECIALIST IN FENCING, TURFING,
 PATIOS ALSO GENERAL GARDEN WORK
 including Lawns, Hedges, Clearance,
 and Pressure Cleaning

Local References Free Estimates
 01256 882108 or 07768 105488



**OUTSTANDING
 VETERINARY CARE
 ON YOUR DOORSTEP!**



SCAN THE QR
 CODE TO FIND
 OUT MORE!

Paynes Meadow, Lychpit,
 Basingstoke, RG24 8AD
 01256 329 522



Spencer & Peyton Ltd
Established 1961

Our family serving your
 family for 65 years

3rd Generation
 family owned
 and run Funeral
 Directors and
 Monumental
 Masons

24 Hours



380 Worting Road
 Basingstoke, RG22 5DZ
01256 323165

7 London Road
 Hook, RG27 9DY
01256 761717

Trading Standards approved

funerals@spencerandpeyton.co.uk
www.spencerandpeyton.co.uk

ON SITE FLORIST



01256 355556

www.theflowergirlflorist.co.uk



R. LOVELOCK
 HEATING & PLUMBING

ALL ASPECTS OF PLUMBING
 INCLUDING

- BOILER FITTING • SERVICING & REPAIRS
- GENERAL PLUMBING

MOB: 07383 064464
 EMAIL: contact@riovelockheating.co.uk



● BASINGA

EDITOR: Lyn Caswell, 1 Lingfield Close, Old Basing, RG24 7ED 07909 962141
SECRETARY: Graham Merry, 40 Linden Avenue, Old Basing, RG24 7HS 07723 022707
TREASURER: Andy Grove, 30 Pyotts Copse, Old Basing, RG24 8WE 07918 644187
ADVERTISING MANAGER: advertising@basinga.org.uk
ADVERTISING ASSISTANT: Alan Renwick, 3 Almond Close, Old Basing 01256 326155
DISTRIBUTION:
Old Basing Area: Peter Watson, 19 Priory Gardens, Old Basing, RG24 7DS 07790 279954
Lychpit Area: Andrée McLean, 6 Pimpernel Way, Lychpit, RG24 8SS 01256 819006
WEBMASTER: Alan Morris, 29 Lingfield Close, Old Basing, RG24 7ED 07816 659189

● OLD BASING & LYCHPIT PARISH COUNCIL

CLERK: Kate Hope 01256 462847
OFFICE AND HOURS: The Pavilion, The Recreation Ground
Monday to Thursday 10am to noon

● CHURCH INFORMATION FOR THE AREA

Church of England (Parish of Old Basing & Lychpit)

ASSISTANT CURATE: Rev'd Helen Holley 07541 698235
email: curate@stmarysoldbasing.org.uk
ADMINISTRATOR: Debbie Filer email: admin@stmarysoldbasing.org.uk 07541 698235

Regular Services at St Mary's Church, Old Basing

SUNDAY: 8am Holy Communion; 9.30am Sung Eucharist
OTHER DAYS: Wednesday, 10am – Holy Communion; Monday, Thursday and Friday, 8.45am – Morning Prayer
Changes to the regular service pattern and other weekday services are shown in the weekly news-sheet, a copy of which is displayed on the noticeboard in the church porch

Old Basing Methodist Church

MINISTER: Rev'd Claire Simpson 01256 323103
email: revclaire72@btinternet.com
SUNDAY SERVICE: Morning Service 10.30am

Roman Catholic

PRIEST: Fr. John Lee 01256 465214
St Bede's Church, Popley Way, Basingstoke
SUNDAY MASSES: 9am, 11am and 6pm



For straightforward solutions and a professional smooth service, **GET IN TOUCH**

Your local mortgage broker

I am Jordan Willis, the JW of JW Private Finance; your local mortgage broker living in Old Basing. I support clients throughout the UK with a strong focus on Hampshire, Berkshire, Surrey & Greater London. Together with an excellent team, I help people find the best solutions for their borrowing.

The business is built upon referrals and recommendations.

Buy to Lets

Bridging Finance

Commercial Mortgages

Development Finance

Second charge Mortgages

HOW CAN WE HELP?

Book a free consultation with us today

Telephone
0203 879 1754

Direct line
07882 839273

Email
jordan@jwprivatefinance.co.uk

JW Private Finance Ltd.
Company registered in England and Wales, registration number 12608971
ICO reference – ZA758687

Crusade

CLEANING SERVICES



Based in Old Basing, our services include:

- Domestic and commercial
- Window cleaning
- Conservatory roof cleaning
- Gutter and down pipe clearance
- Soffit, fascias and gutter cleaning
- Pressure washing

Contact us for a free quotation

01256 766899

www.crusadecleaning.co.uk